

**COGNEX®**

---

# DataMan® 8050

Quick Reference Guide

**DATAMAN**  
ID Readers

<b>1</b>	<b>Getting Started</b>	About DataMan 8050 • DataMan 8050 Accessories • Physical Layout of the Reader and the Base Station	<b>Page 4</b>
<b>2</b>	<b>DataMan 8000 Software</b>	Overview of Setting Up the Reader • Install DataMan 8000 Software • Start the Setup Tool • Use the Setup Tool Menu Bar	<b>Page 12</b>
<b>3</b>	<b>Connection Options</b>	Connecting Through Ethernet • Troubleshooting an Ethernet Connection • Connecting Through RS-232 • Connecting through USB	<b>Page 18</b>
<b>4</b>	<b>Using DataMan 8050 Wireless Readers</b>	Connecting to a Wireless DataMan 8050 • Pairing Strategy • Base Station Routing Capabilities • Ad-hoc Mode • Infrastructure Mode • Buffering Data • Summary of Wireless Indicators • Charging • Changing Batteries	<b>Page 22</b>
<b>5</b>	<b>Reading Codes with the DataMan 8050</b>	Trigger Types • DataMan 8050 Imager Specifications • Map of Field of View and Reading Distances	<b>Page 42</b>
<b>6</b>	<b>Industrial Protocols, Compliance Information, Warnings and Notices</b>	Industrial Protocols • DataMan 8050 Reader and Base Station Specifications • Agency Compliance Statements	<b>Page 44</b>

# About DataMan 8050

The DataMan 8050 readers offer the industry’s most advanced technology for reading 1D and 2D codes regardless of size, quality, printing method or surface, and belong to the only industrial handheld ID reader family that offers Industrial Ethernet communication.

DataMan 8050 is available with patented 1DMax+ with Hotbars, class-leading 2-D algorithms and future-proof modular communication slide-ins.



The **DataMan 8050** readers use bright field illumination and class leading algorithms in two models: 8050 and 8050X. The DataMan 8050 is designed for high-speed reading of challenging label-based barcodes and the 8050X reads more challenging barcodes, including direct part mark barcodes.

The DataMan 8050 readers are available with the following communication options:

- USB
- RS-232
- Bluetooth
- WiFi

An intelligent base station is also provided when the DataMan 8050 reader uses the wireless (Bluetooth or WiFi) communication module. The base station acts as a router between the reader and your computer or network.

Infrastructure Mode does not use the base station for communication (see page 30-31).

**\*NOTE:** Henceforward, the term ‘wireless’ refers in this document to the WiFi or to the Bluetooth communication module of the reader.

The DataMan 8000 series base stations are available with the following communication options:



	Base Station Communication			Wireless Protocol	
	Ethernet with Industrial Protocols	USB	RS-232	Bluetooth	WiFi
DMA-CBASE-01		✓			
DMA-IBASE-BT-01		✓	✓	✓	
DMA-IBASE-BT-02	✓	✓	✓	✓	
DMA-IBASE-01	✓	✓	✓		✓

# DataMan 8050 Accessories



Serial/USB slide-in  
DMCM-SERIALM-00



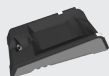
Ethernet slide-in  
DMCM-ENETM-00



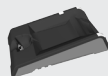
Bluetooth slide-in  
DMCM-BTM-00



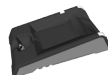
Wireless slide-in  
DMCM-WLESSM-00



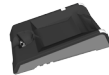
Charging Base Station  
DMA-CBASE-01



Intelligent Bluetooth  
Base Station  
DMA-IBASE-BT-01



Intelligent Bluetooth  
Base Station  
DMA-IBASE-BT-02



Intelligent Base  
Station  
DMA-IBASE-01



Power Supply for  
base station  
DMA-24V\_PWR-xx



Power Supply for  
reader  
DM100-PWR-00



Battery for the wireless  
reader  
DMA-HHBATTERY-01



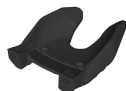
Multi-Battery Charger  
DMA-MBC-xx



POE Adapter  
CPS-24V-POE1



POE Adapter  
CPS-24V-POE4



Wall Mount  
DMA-WALL-8000-00



Wall Mount for Base  
Station  
DMA-IBASE-WALL-00



POE Adapter  
CPS-AC-POE1A-xx



Stand  
DM-STAND-00

## DataMan 8050 Reader Cables



RS-232 coiled cable  
for reader, 2.5 m  
DM8000-RS232-02



RS-232 coiled cable  
for reader, 5 m  
DM8000-RS232-05



RS-232 industrial cable  
for reader, 2.5 m  
DM8000-RS232IND-02



USB cable, 2.5 m  
DM8500-USB-00



USB coiled cable, 2.5 m  
DM8500-USBC-02

## DataMan 8050 Accessories (Continued)



Ethernet Coiled cable, 5m  
DM8000-ECABLEC-05\*



Ethernet cable, 2.5 m  
DM8000-ECABLE-02



Ethernet cable, 5 m  
DM8000-ECABLE-05



Ethernet cable, 30 m  
DM8000-ECABLE-30

**\*Note:** Collimated cable length including DM8000-ECABLE-X should not exceed 50 m.

## DataMan Base Station Cables



RJ25 (RJ12) to DSUB9  
cable for base station,  
5 m  
DMA-RS232RJ-05

- USB cable for base station: Use any standard USB-A to USB-B 2.0 cable up to 3 meters
- Ethernet cable for base station: Use any standard CAT5/5e, SF/FTP or S/FTP cable
- DMA-USB-00: Straight 10ft USB cable

## Physical Layout of the Reader

LED aimer guide



Communication  
module insertion  
point

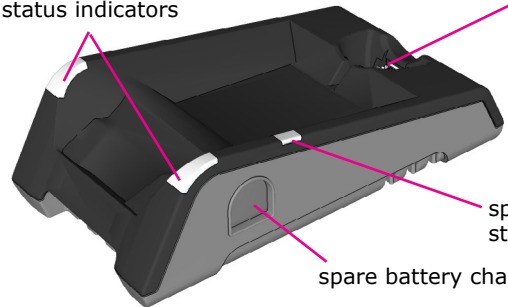


1. Lanyard hook
2. Indicator light
3. Communication module insertion point

# Physical Layout of the Base Station

## DMA-IBASE-01

base station status indicators

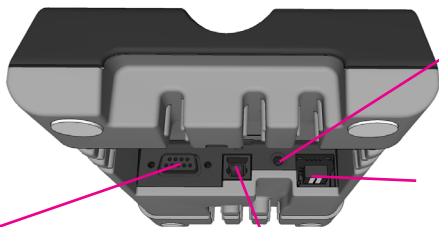


Connection point with the reader:

- pairing reader and base station
- non-wireless communication
- charging

spare battery charger status indicator

spare battery charger



power plug (24V, max. 13W)

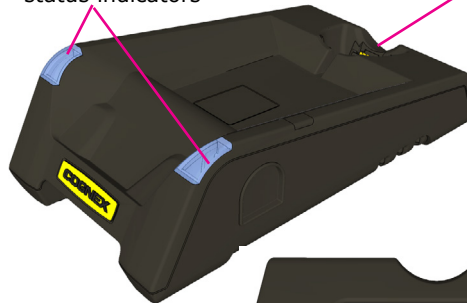
Ethernet (with optional Class 3 PoE power)

RS-232

USB

## DMA-IBASE-BT-XX

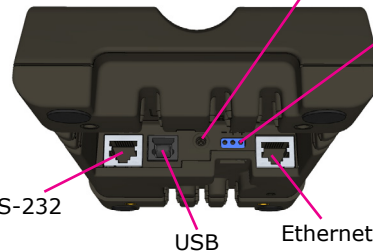
base station status indicators



Connection point with the reader:

- pairing reader and base station
- non-wireless communication
- charging

power plug (24V, max. 15W)



alternative power supply connector (24V, max. 15W, polarity marked on the plastic part near the connector)

RS-232

USB

Ethernet

### NOTE:

- DMA-IBASE-BT-01 does not support Ethernet
- DMA-IBASE-BT-02 does support Ethernet

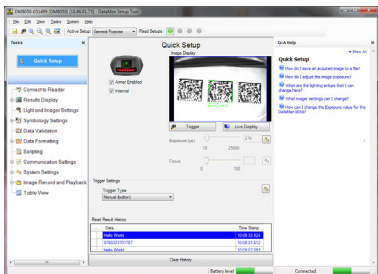
Base station status indicators:

- Power: RED = base powered / BLINK = wrong reader in base
- Communication: BLUE = Wireless link / BLINK = Wireless communication
- Cradle connections: GREEN = reader properly inserted / BLINK = cradle USB interface communication

## Overview of Setting Up the Reader

To be able to connect to your reader or base station on your computer, you must perform the following steps:

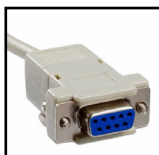
1. Install the Setup Tool on your computer.



2. Select the connection type: Ethernet, Serial, or USB; and connect the appropriate cabling.



Ethernet



RS-232

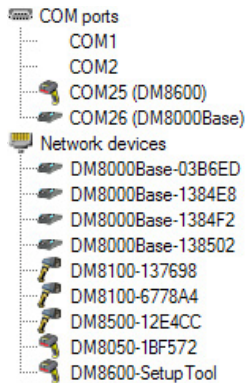


USB

3. Power on your device(s).

## Install DataMan 8000 Software

1. Check the DataMan Release Notes for a full list of system requirements.
2. Download the DataMan Setup Tool from <http://www.cognex.com/support/dataman> and follow the on-screen steps.
3. Connect the DataMan 8050 to your PC.
4. Launch Setup Tool and click **Refresh**. The reader or the base station appears under **COM ports** or **Network devices**.
5. Select a **COM port** or a **Network device** and click **Connect**.



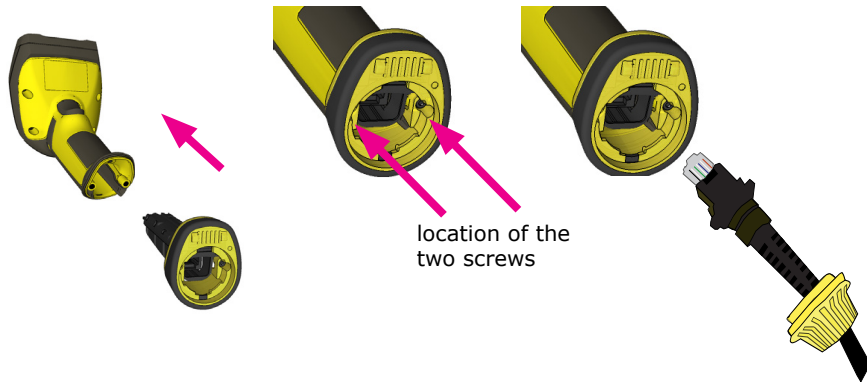
**RS-232/USB  
connection**

**Ethernet connection**

"DM8xx0" with the last 6 characters of MAC address, printed on the back of the reader or the base station

## Connecting a DataMan 8050 Through RS-232

1. Connect the serial slide-in (DMCM-SERIALM-00) to your DataMan 8050.
2. With a 2.5 mm Allen Wrench, tighten the screws so that the slide-in is firmly locked.
3. Insert the plug and slide the cable lock up to the reader and twist the cable lock in place.



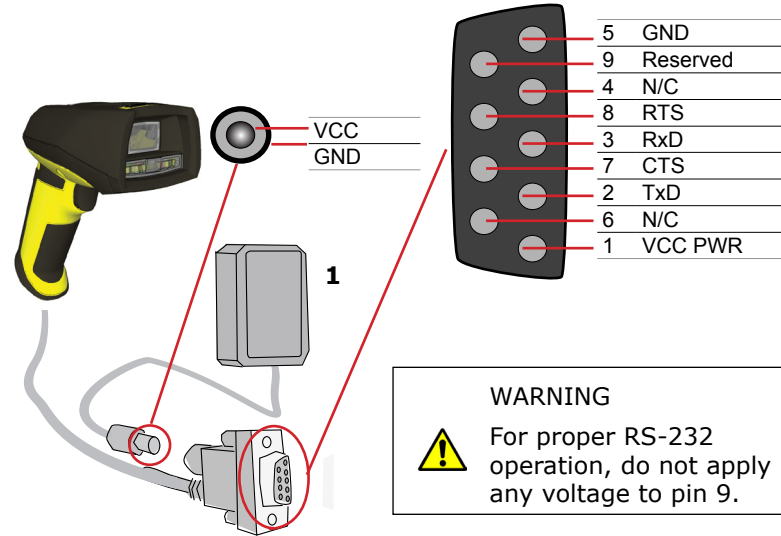
Use the DM8000-RS232-02 cable (2.5 meters) or the DM8000-RS232-05 cable (5 meters). For power supply, use the DataMan 8000 Power Supply (DM100-PWR-000).

### WARNING



Disconnect DataMan from power before inserting/removing communication modules.

Observe the following electrical requirements:



### WARNING



For proper RS-232 operation, do not apply any voltage to pin 9.

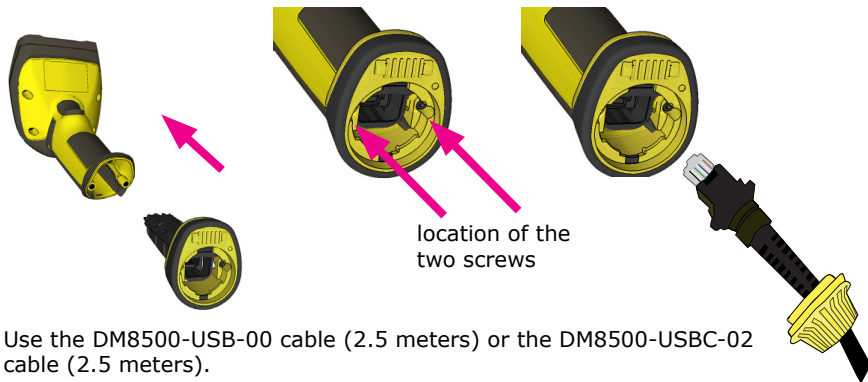
1. 6VDC power supply (DM100-PWR-000), a 5.5mm x 2.1mm DC Power Plug
2. VCC = +4.75V up to +6.0V for 2.5 m cable  
VCC = +5.5V up to +6.0V for 5.0 m cable

Power on the RS-232 cable can be supplied by either the DC Power Plug or Pin 1 of the D-SUB. **DO NOT** use both in parallel.



## Connecting a DataMan 8050 Through USB

1. Connect the serial slide-in (DMCM-SERIALM-00) to your DataMan 8050.
2. With a 2.5 mm Allen Wrench, tighten the screws so that the slide-in is firmly locked.
3. Insert the plug and twist the cable lock in place.



Use the DM8500-USB-00 cable (2.5 meters) or the DM8500-USBC-02 cable (2.5 meters).

**NOTE:** DataMan 8050 does not require an external power supply.

### WARNING

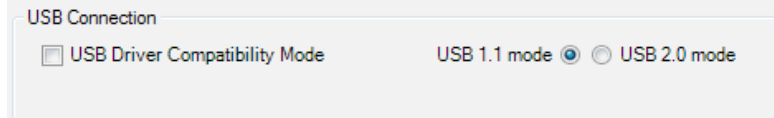


Disconnect DataMan from power before inserting/removing communication modules.

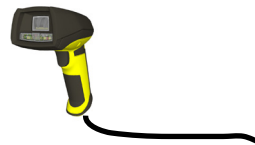
## Using Your Device Through USB

If you connect your reader with the coiled USB cable, you must use your device in USB 1.1 mode. With a straight USB cable, you can use your device in both modes.

Change the USB Connection in the *Serial* tab of the *Communication Settings* pane in Setup Tool, or scan the appropriate code from the *DataMan Configuration Codes* document.



You can also switch the USB mode (CDC or HID) of both the reader and the base station with a pair of RP codes. Perform the following steps:



1. Disconnect from Setup Tool if you are connected.
2. Scan the "USB Keyboard" code from the *DataMan Configuration Codes* document.
3. Start scanning codes with your corded reader.

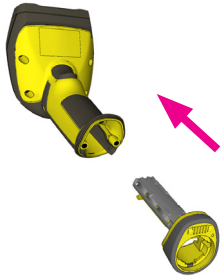


Bluetooth

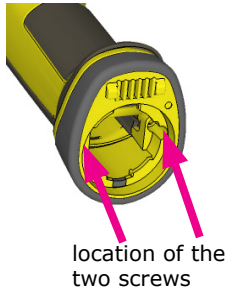
1. Disconnect from Setup Tool if you are connected.
2. Scan the "Enable USB Keyboard for the base station" code from the *DataMan Configuration Codes* document.
3. Start scanning codes with your wireless reader.

# Connecting to a Wireless DataMan 8050 Through a Base Station

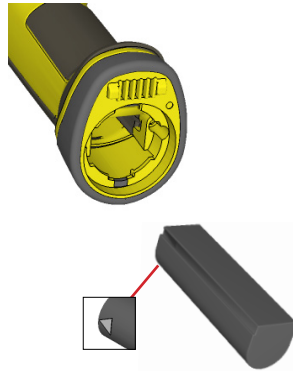
1. Connect the wireless slide-in (DMCM-BTM-00) to your DataMan 8050.



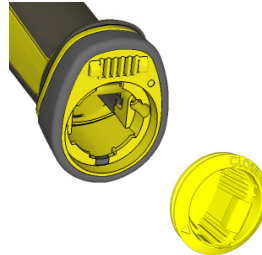
2. With a 2.5 mm Allen Wrench, tighten the screws so that the slide-in is firmly locked.



3. Insert the battery.

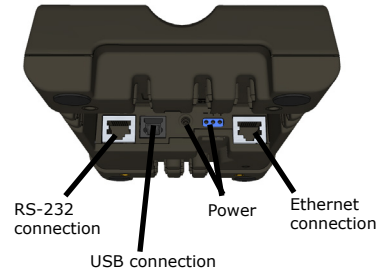


4. Insert the plug and twist it in place.

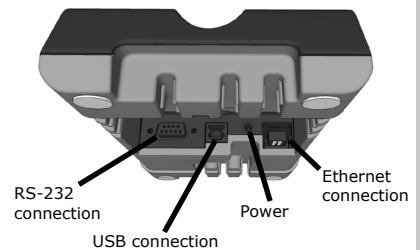


5. Power up the DMA-IBASE-BT-XX base station using a 24V power supply (DMA-24VPWR-XX). In the case of a DMA-IBASE-01 base station, use either a 24V power supply, or a Class 3 Power Over Ethernet adapter.

6. Connect your base station to your PC using either serial, USB or Ethernet communication.



**DMA-IBASE-BT-XX**



**DMA-IBASE-01**

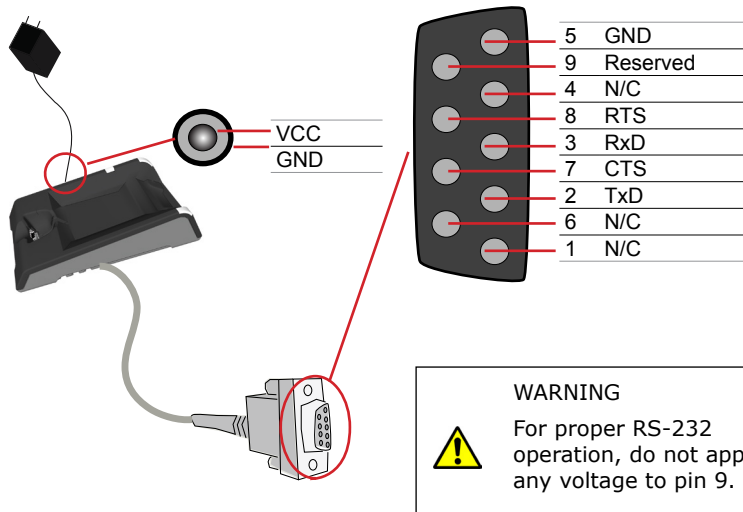


## WARNING

Remove battery from your DataMan before inserting/removing the communication module.

## Wireless Connections (Continued)

Observe the following electrical requirements when connecting the base station through RS-232:



Power to base station can be supplied by either the DC power plug or by wiring in 24V. **DO NOT** use both in parallel.

The DC power plug is a 24VDC power supply (DMA-24VPWR-xx), 3.5mm x 1.3mm.

**NOTE:** Be careful to use the appropriate connector for RS-232. (See page 19.)

7. When the base station is powered up, scan the Pair scan code and place your reader into the base station. The base station's status indicator becomes green. When the wireless reader is removed from the base, a wireless connection is established. The status indicator of both the base station and the reader become blue and you can hear a beep. Blue lights indicate that the reader and the base have successfully paired and are communicating.

8. Connect to your base station or to the wireless reader. You have the following connection options:

Base Station Connection Type	Connect to Reader in the Setup Tool	Connection Channels
RS-232	Wireless reader appears: COM port (Base Station does not appear)	terminal program Setup Tool
USB	Base Station appears: COM port 1 Wireless reader appears: COM port 2	terminal program Setup Tool
Ethernet	Base station appears: Network device 1 Wireless reader appears: Network device 2	terminal program Setup Tool

## Wireless Connections (Continued)

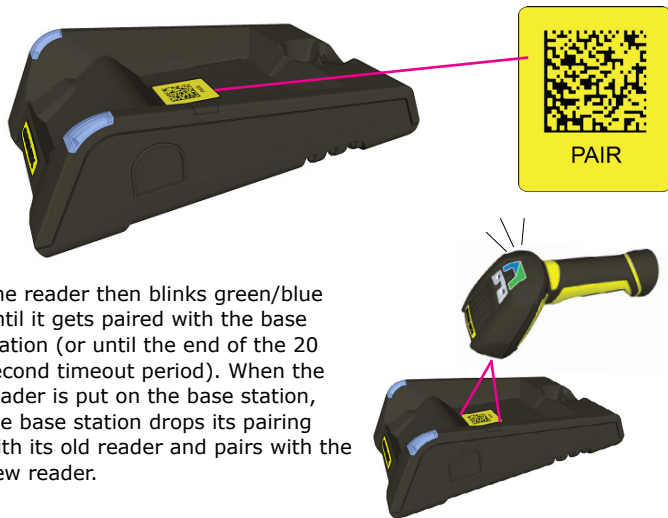
9. Lift your reader up from the base station and start reading codes.

### NOTES

- When the reader is on the base station, communication is established by means of cradle contacts. Wireless communication is disabled.
- Configure wireless communication settings by connecting to the base station. In order for the changed settings to be synchronized between the DataMan 8050 wireless reader and the base station, place your reader in the base station after your changes are saved. To assign a static IP address to the base station or the reader when communicating via Ethernet, connect to the base station in Setup Tool. The base station, however, auto-assigns the IP address to the reader when they become paired.
- When you connect with the base station to a terminal program, your wireless reader sends decode results to the terminal, but you cannot send commands to the reader.
- If you want to unpair your reader from the base station, you can either click **Unassign** in the **Bluetooth** or **Wireless** tab of the *Communication Settings* pane of Setup Tool (when you are connected either with the reader or the base station), or scan the "Unassign Reader" reader configuration code.
- If you place the wrong reader (that is, a reader that is not associated with the base station) into the base station, the base station status indicator flashes red and a series of short beeps can be heard.

## Pairing Strategy (DMA-IBASE-BT-XX)

In order to pair the base station and the reader in a single step without considering former pairing states and without using Setup Tool, scan the Pair code from the scan code sticker on the base station.



The reader then blinks green/blue until it gets paired with the base station (or until the end of the 20 second timeout period). When the reader is put on the base station, the base station drops its pairing with its old reader and pairs with the new reader.

### IMPORTANT!

Scanning the Pair code puts the base station and the reader put on it into **force pairing mode**.

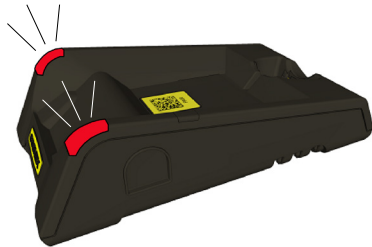
This means that the reader and the base it is put on get paired regardless of any assignments they both had previously. This force pairing mode is valid for 20 seconds after reading the Pair code.

## Pairing Strategy (Continued)



The base station's indicators turn green to indicate successful pairing.

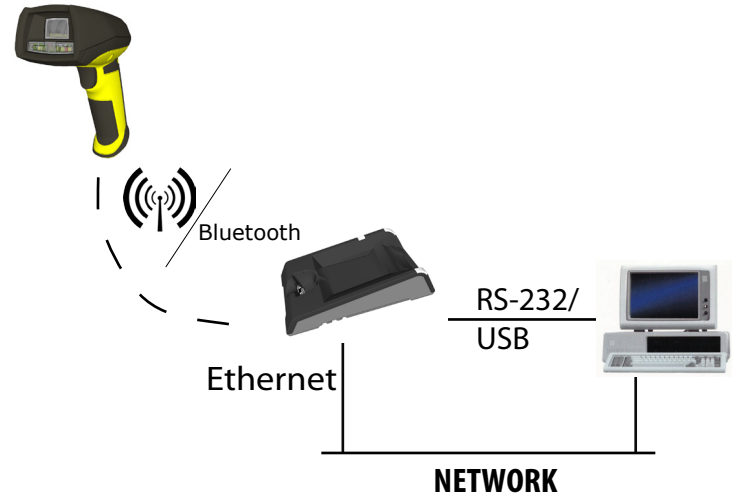
When the reader is put onto another (unpaired) base station without any previous actions, the base station signals this event with beeping and red flashing of its indicators.



The base station that is paired with a certain reader signals a bad reader alert (beeps and flashing red indicators) also when another, unassigned reader is put into it.

## Base Station Routing Capabilities

The base station is visible as connected through either RS-232, USB or Ethernet, but it routes data through the wireless interface to the reader.

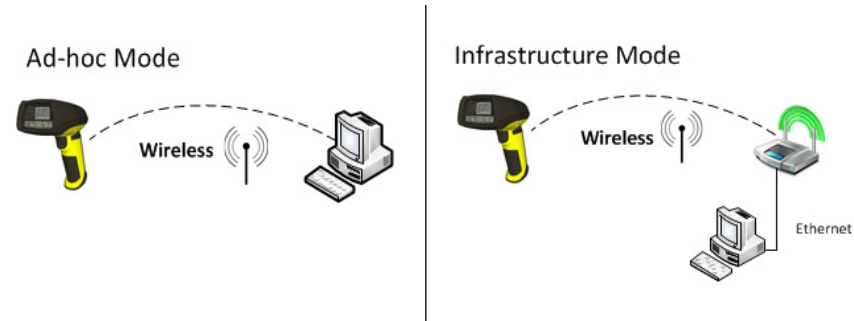


## Ad-hoc Mode

It is possible to connect to the reader wirelessly with the computer in ad-hoc mode (using a reader-created Wifi connection). Reset the reader to factory defaults (this configures the device to ad-hoc mode), and after the device appears under Wifi connections, connect to it with Setup Tool and then use the **Wireless** tab under **Communication Settings** to configure authentication and encryption (which are not configured by default). For more information, see the *Communications and Programming Guide*.

### NOTE:

- The base station is only used for charging the reader in this setup. If an intelligent base station is used, the reader has to be unassigned in Setup Tool (connected to the base station) under **Communication Settings > Wireless** tab if the reader has already been placed in the base station.
- Also note that placing the reader in the intelligent base station automatically re-assigns it to the base station unless the base station is unplugged from the network first.



## Infrastructure Mode

It is possible to connect to the reader in infrastructure mode using Wifi connection. You need to reset the reader to factory defaults, connect to the device in ad-hoc mode, and then use the **Wireless** tab under **Communication Settings** to activate and configure infrastructure mode.

Infrastructure mode requires a router as an access point. Encryption and authentication are available as seen in the table below. See the *Communications and Programming Guide* for detailed information.

Authentication mode	Encryption	Requirements
Open System	WEP-40, WEP-104	passphrase
WPA-PSK, WPA2-PSK	TKIP, AES, TKIP/AES	passphrase
EAP-TLS	TKIP, AES, TKIP/AES	<ul style="list-style-type: none"><li>• Client's certificate</li><li>• CA's certificate</li><li>• Client's private key</li><li>• Client's username</li></ul>
PEAP-MSCHAPV2	TKIP, AES, TKIP/AES	<ul style="list-style-type: none"><li>• CA's certificate</li><li>• Client's username</li><li>• Client's password</li></ul>

### NOTE:

- The base station is only used for charging the reader in this setup. If an intelligent base station is used, the reader has to be unassigned in Setup Tool (connected to the base station) under **Communication Settings > Wireless** tab if the reader has already been placed in the base station.
- Also note that placing the reader in the intelligent base station automatically re-assigns it to the base station unless it is unplugged from the network first.

## Wireless Reader: Buffering Data

When you are within the wireless range of the base station, your wireless reader sends decoded data to your PC through the base station, just as if you used a tethered reader. You can also see the decoded images in Setup Tool, if it is running and is connected to the reader.

When you leave the wireless range, however, you lose connection to your PC, but you can still keep reading codes. The decoded data is saved in the buffer of the reader.

This buffered data appears on your PC again when you come back within the wireless range, but **ONLY IF** you were connected to a terminal program when you left the wireless range.

Buffered read results on the reader are not displayed in Setup Tool; they are only transmitted over an existing keyboard emulation, RS-232 Serial or TCP/IP Telnet connection. **NOTE** that the images acquired by the reader when it is out of the wireless range are *never* saved, and cannot be retrieved.

Open a connection with the reader in a terminal program so that you gain the buffered data when wireless connection is established again.

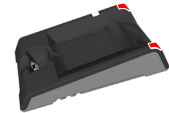
See the following table for connection options according to communication type:

Base Station Connection Type	How to Connect
RS-232	Connect to the COM port of the base station.
USB	Connect to the COM port of the wireless reader.

Base Station Connection Type	How to Connect
Ethernet	Connect to the terminal program using the IP address of the reader. To find out the IP address, go to the <i>Connect to Reader</i> pane in Setup Tool and hover your mouse over the reader. The IP address appears.
USB Keyboard	Open the text editor or your program of choice to use keyboard emulation. When you return to the wireless range, keyboard emulation continues, starting with the buffered data.

While you are still within the wireless range, the reader occasionally blinks blue to indicate that the wireless connection is established.

When the reader leaves the wireless range, the base station's signal becomes red.



Blinking blue status indicator: wireless connection is alive.



## Wireless Reader: Buffering Data (Continued)

When you leave the wireless range, you can still keep reading codes. The reader going offline is indicated by a long beep and the status indicator flashes magenta.

status indicator blinks  
magenta: your reader is  
offline



When the reader is offline, good reads are indicated with 2 short beeps and the selected good read status indicator color (green by default).

status indicator beeps twice:  
your reader is offline while  
decoding symbols



When the buffer is full, no more codes are read. The reader does not discard the oldest read.

when the buffer is full, the  
reader beeps and the status  
indicator becomes white



## Summary of Wireless Buffering Indicators

Condition	Status Indicator: Reader	Status Indicator: Base Station	Sounds
Reader in wireless range of base station	<p>When the reader is awake, <b>blinking blue</b> indicates wireless connection with base.</p> <p>When the reader is offline, no indicator. Pull the trigger to wake it up and it will blink blue.</p> <p>Good read: <b>green</b>, single beep (default)</p> <p>No read: <b>red</b>, no beep (default)</p>	<p>Reader out of the base station and reader is awake: steady <b>blue</b>.</p> <p>Reader out of the base station and reader is offline: steady <b>red</b>.</p> <p>Paired reader in the base station: <b>flashing green</b>.</p> <p>Base station is receiving data or images from reader: steady <b>blue</b>.</p>	<p>Good read: 1 beep (default)</p> <p>No read: no beep (default)</p>
Reader out of wireless range of base station	<p>Offline: When the reader wakes up out of the wireless range, there is no indicator.</p> <p>Good read: <b>green</b> (default)</p> <p>No read: <b>red</b> (default)</p>	Reader offline: steady <b>red</b> .	<p>Long beep when you leave the wireless range.</p> <p>Good read: 2 beeps</p> <p>No read: no beep</p>
Reader out of wireless range, buffer is full	<p>Good read: <b>green</b> and then white.</p> <p>No read: <b>red</b> (default)</p>	Reader offline: steady <b>red</b>	<p>Good read: long beep</p> <p>No read: no beep</p>



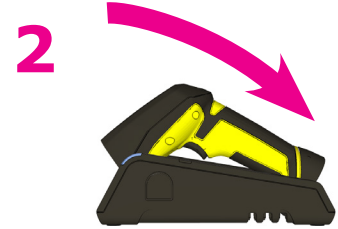
## Wireless Reader: Charging

When you are reading codes with your wireless reader, blinking red status indicators will indicate a low battery. As the battery discharges, the blink frequency increases.

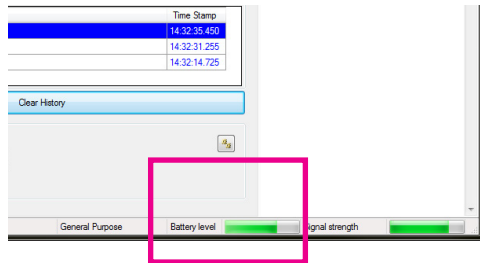
Blinking red status indicator indicates low battery or thermal shutdown mode.



Place the reader on the base station for charging. Make sure that the pins at the end of the handle make contact with the pins in the base station.



You can also check the status of the battery in Setup Tool.



Paired Reader Charging



Paired Reader Fully Charged

## Wireless Reader: Charging (Continued)

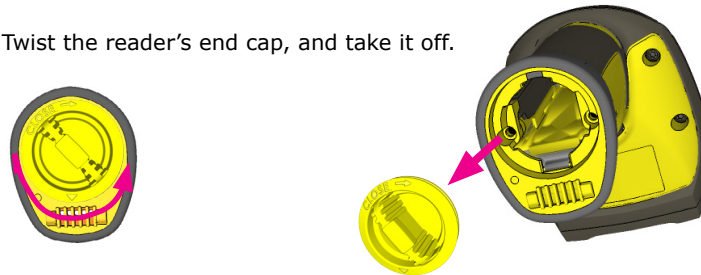
Refer to the following table for a summary of indicators regarding charging.

Condition	Status Indicator: Reader	Status Indicator: Base Station
Battery low	flashing red indicators	<ul style="list-style-type: none"><li>• steady blue, indicating connection</li><li>• flashing blue, indicating data transfer</li></ul>
Reader is charging in the base station	steady red indicators	<ul style="list-style-type: none"><li>• steady green, indicating connection</li><li>• flashing green, indicating data transfer</li></ul>
Reader is fully charged in the base station	steady green indicators	<ul style="list-style-type: none"><li>• steady green, indicating connection</li><li>• flashing green, indicating data transfer</li></ul>

## Wireless Reader: Changing Batteries

To change batteries, perform the following steps:

1. Twist the reader's end cap, and take it off.



2. Hold the reader in an upright position and the battery will slide out of the handle. NOTE that you may need to shake the reader slightly.

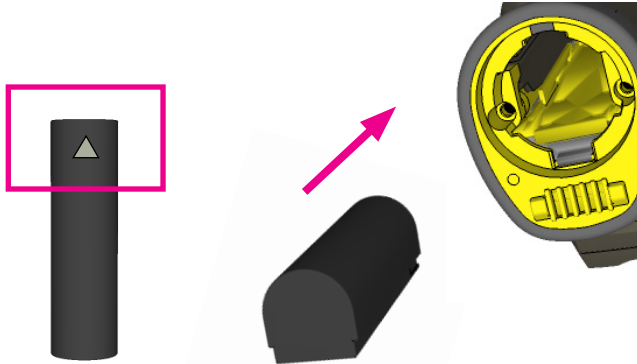


### CAUTION

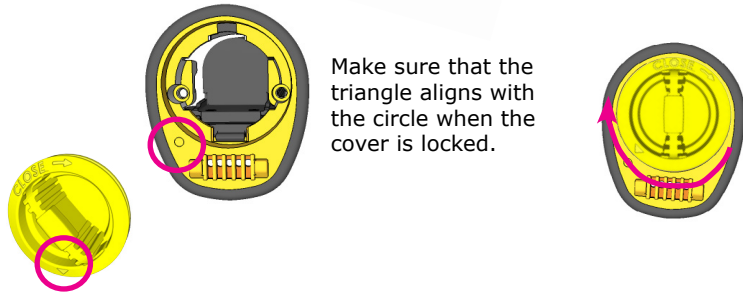
The battery used in these devices may present a risk of fire or chemical burn if mistreated. Do not disassemble, heat above 60°C (140°F), or incinerate. Replace battery with Cognex DMA-HHBATTERY-01 only. The use of another battery may present a risk of fire or explosion.

## Wireless Reader: Changing Batteries (Continued)

3. Put the replacement battery into the slot. The battery has a small triangle on one side. Make sure that you insert the battery in a way that the triangle end goes into the slot first.

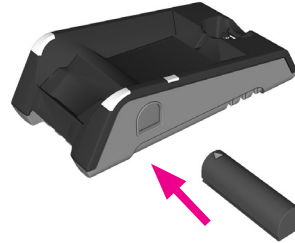


4. Put the end cap back on and twist it.

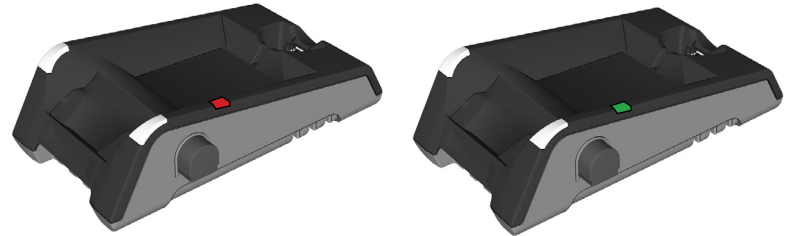


Make sure that the triangle aligns with the circle when the cover is locked.

5. If using DMA-CBASE-01, place the battery in the spare battery charger in the direction of the small triangle of the battery.



When you are charging the auxilliary battery, the base station's spare battery status indicator displays either charging in progress (red) or fully charged (green).



6. Dispose of used battery promptly. Keep it away from children. Do not disassemble and do not burn it. Use the appropriate separate take-back systems for battery disposal.

## Trigger Types

The DataMan 8050 trigger mode determines when the reader attempts to read a code. Use Setup Tool or the appropriate reader configuration codes to change trigger types.

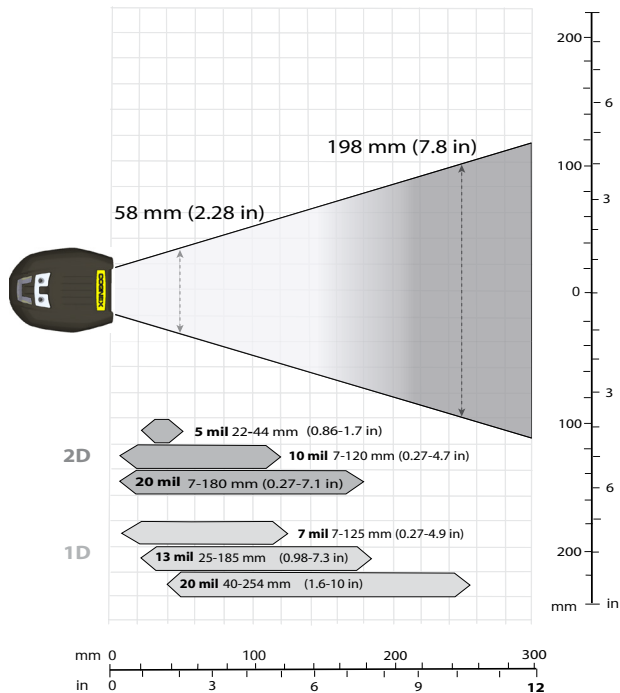
The following trigger types are supported:

- Presentation: The LED aimer is always on.
- Manual (default): Begins acquiring images when you press the trigger button on the reader, and continues acquiring images until a symbol is found and decoded or you release the button.

## DataMan 8050 Imager Specifications

Specification	DataMan 8050 Imager
Image Sensor	1/3 inch CMOS
Image Sensor Properties	6.0 $\mu\text{m}$ square pixels
Image Resolution (Pixels)	752 x 480

## Map of Field of View and Reading Distances

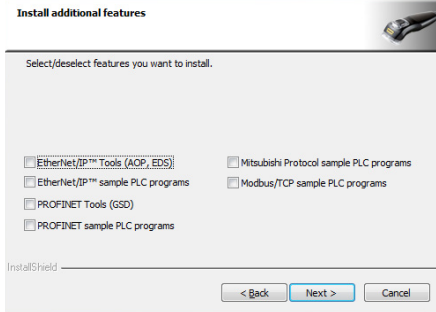


**NOTE** that due to tolerances, ranges can vary by +/- 5 mm for small codes to +/- a couple of centimeters for large codes.

## Industrial Protocols

The DataMan 8050 readers support the following industrial protocols:

- EtherNet/IP™
- PROFINET
- MC Protocol
- Modbus TCP



Select the industrial protocol tools and sample programs when installing the Setup Tool.

There are three ways to enable or disable Industrial Protocols. Using either method, a reboot is required for the changes to come into effect.

- Enable the protocols using the **Industrial Protocols** pane of the Setup Tool (under Communication Settings).
- Scan the appropriate **Reader Configuration codes** (see *Reader Configuration Codes* available through the Windows Start menu or the Setup Tool Help menu).
- Send the appropriate **DMCC** (see *Command Reference* available through the Windows Start menu or the Setup Tool Help menu).

For more information on using the industrial protocols, read the *DataMan Communications and Programming Guide* available through the Windows Start menu or the Setup Tool Help menu.

## DataMan 8050 Specifications

Weight	400 g (with battery)
Operating Temperature	0°C — 45°C (32°F — 113°F)
Storage Temperature	-10°C — 60°C (14°F — 140°F),
Maximum Humidity	95% (non-condensing)
Codes	Data Matrix™; QR Code and microQR Code; UPC/EAN/JAN; Codabar, Interleaved 2 of 5, Code 39, Code 128, and Code 93, Pharma, Postal, RSS/CS, PDF 417, MicroPDF 417
Power Supply Requirements	<ul style="list-style-type: none"> <li>• USB: bus powered (optionally: external 2.5Wmax LPS or NEC class 2 power supply +5V - +6V DC)</li> <li>• RS232 external 2.5Wmax LPS or NEC class 2 power supply +5V - +6V DC</li> <li>• ETH: Class 2 PoE supply IEEE 802.3af (connect only to PoE networks without routing to the outside plant)</li> </ul>
Inrush current peak	5A maximum Duration: approx. 30µs Electrical charge: 60µAs at 6V
Battery life for wireless reader (typical use case)	ca. 3200 triggers can be operated within a 10 hour working shift
Ethernet	10/100 Base-T FULL/HALF DUPLEX, IEEE 802.3
Bluetooth	Bluetooth™ 2.1, 2.4 GHz
WiFi	802.11 b/g, 2.4 GHz, User Selectable channels 1-11

## DataMan Base Station Specifications

	<b>DMA-IBASE-BT-XX</b>	<b>DMA-IBASE-01</b>
Weight	300 g	328 g
Operating Temperature	0°C — 45°C (32°F — 113°F)	0°C — 40°C (32°F — 104°F)
Storage Temperature	-40°C — 60°C (-40°F — 140°F)	-40°C — 60°C (-40°F — 140°F)
Maximum Humidity	95% (non-condensing)	95% (non-condensing)
Power Supply Requirements	24V +- 10%, 15 W maximum LPS or NEC class 2 power supply	24V +- 10%, 13 W maximum LPS or NEC class 2 power supply, or PoE class 3 (connect only to PoE networks without routing to the outside plant)

## Agency Compliance Statements

The DataMan 8050 series device meets or exceeds the requirements of all applicable standards organizations for safe operation. However, as with any electrical equipment, the best way to ensure safe operation is to operate them according to the agency guidelines that follow. Please read these guidelines carefully before using your device.

The following specifications apply to the DataMan 8050 corded readers:

<b>Regulator</b>	<b>Specification</b>
USA	FCC Part 15B, Class A
Canada	ICES-003
European Community	EN55022, Class A
	EN55024
	EN60950

### FCC Class A Compliance Statement

This device complies with Part 15 of the FCC Rules.

Operation is subject to the following two conditions:

- (1) this device may not cause harmful interference, and
- (2) this device must accept any interference received, including interference that may cause undesired operation.

### Canadian Compliance

This Class A digital apparatus complies with Canadian ICES-003.

Cet appareil numérique de la classe A est conforme à la norme NMB-003 du Canada.

# Agency Compliance Statements (Continued)

## European Compliance



This equipment complies with the essential requirements of EU Directives 1999/5/EC, 2004/108/EC and 2006/95/EC, as applicable. Declarations are available from your local representative.

Където е приложимо, оборудването е съобразено с основните изисквания на Европейските директиви 1999/5/EC, 2004/108/EC и 2006/95/EC. Декларации са налични от местния представител.

Toto zařízení splňuje základní požadavky směrnic EU 1999/5/ES, 2004/108/ES a 2006/95/ES, vždy dle konkrétního způsobu použití. Příslušná prohlášení jsou k dispozici u vašeho lokálního distributora.

Dette udstyr overholder de væsentlige krav i EU-direktiv 1999/5/EF, 2004/108/EF og 2006/95/EF, som er relevant. Erklæringerne kan fås hos din lokale repræsentant.

Tämä laitteisto täyttää seuraavat EU Direktiivien olennaiset vaatimukset 1999/5/EY, 2004/108/EY ja 2006/95/EY, soveltuvin osin. Vaatimusten-mukaisuusvakuutukset ovat saatavilla paikalliselta edustajalta.

Dit produkt voldoet aan de voorschriften van de richtlijnen van de EG Raad (1999/5/EC, 2004/108/EC en 2006/95/EC), indien van toepassing. Declaraties zijn beschikbaar bij uw locale vertegenwoordiger.

Cet appareil est conforme aux exigences essentielles des Directives de l'Union Européenne

1999/5/CE, 2004/108/CE et/ou 2006/95/CE. Veuillez consulter votre représentant local pour les déclarations applicables.

Ezen készülék technikai jellemzői megfelelnek a vonatkozó 1999/5/EC, 2004/108/EC és

2006/95/EC EU rendeletekben foglalt követelményeknek. A megfelelőségi dokumentáció a

gyártó helyi partnereinél áll az Ön rendelkezésére.

Questo prodotto, ove applicabile, risponde alle direttive Europee 1999/5/EC, 2004/108/EC

e 2006/95/EC. Dichiarazioni sono disponibili presso il vostro rappresentante locale.

Ten sprzet jest zgodny z ogólnymi wymaganiami Dyrektyw UE nr 1999/5/EC, 2004/108/

EC i 2006/95/EC, na ile znajdują zastosowanie. Oświadczenia są dostępne u lokalnych

przedstawicieli.

Acest echipament este în conformitate cu cerințele esențiale ale Directivelor EU 1999/5/

EC, 2004/108/EC și 2006/95/EC. Certificățile sunt disponibile la reprezentanta locală.

Toto zariadenie spĺňa základné požiadavky smerníc EÚ 1999/5/ES, 2004/108/ES a

2006/95/ES, vždy podľa konkrétneho spôsobu použitia. Príslušné vyhlásenia sú k dispozícii

u vášho lokálneho distribútora.

Das Gerät erfüllt die wesentlichen Anforderungen der EU-Direktiven 1999/5/EC, 2004/108/

EC und 2006/95/EC, soweit anwendbar. Eine entsprechende Bescheinigung kann bei Ihrem

zuständigen Vertriebspartner angefordert werden.

Ta oprema je skladna in izpolnjuje nujne zahteve direktiv EU 1999/5/ES, 2004/108/ES in

2006/95/ES. Deklaracije so na voljo pri vašemkrajevnem predstavniku.

Αυτός ο εξοπλισμός συμμορφώνεται με τις βασικές απαιτήσεις των εφαρμοσμένων οδηγιών

1999/5/EC, 2004/108/EC και 2006/95/EC της Ευρωπαϊκής Ένωσης. Οι επίσημες δηλώσεις

είναι διαθέσιμες από τον τοπικό σας αντιπρόσωπο.

Dan I-apparat huwa konformi mar-regolamenti stipulati mid-Direttivi Ewropej 1999/5/EC,

2004/108/EC u 2006/95/EC skond kif inhu likabbli. Kopji ta' dawn id-dikjaraz-

## Agency Compliance Statements (Continued)

jonijiet huma  
aċċessibbli mingħand ir-rappreżentant locali tiegħek.

Este equipo cumple con las condiciones vigentes de la EU directivas 1999/5/EC, 2004/108/EC e 2006/95/EC, com é pertinente. Las normativas estão disponível com su representado local.

Este equipo cumple con los requerimientos esenciales de las directivas de la EU 1999/5/EC, 2004/108/EC y 2006/95/EC, si es aplicable. Dichas declaraciones están en poder de sus representantes locales.

Ši iranga atitinka esminius ES direktyvu 1999/5/EC, 2004/108/EC ir 2006/95/EC reikalavimus. Deklaracijos galima gauti iš Jūsų vietinio atstovo.

Šis iekartas atbilst ES direktivu 1999/5/EC, 2004/108/EC un 2006/95/EC prasibam. Deklarācijas ir pieejamas reģionālajaspārstāvniecībās. See seadmed vastavad olulistele nõuetele ELi direktiivide 1999/5/EC, 2004/108/EC ja 2006/95/EC, mida kohaldatakse. Deklaratsioonid on saadaval Teie kohaliku esindaja.

### For European Union Users

Cognex complies with Directive 2002/96/EC OF THE EUROPEAN PARLIAMENT AND OF THE COUNCIL of 27 January 2003 on waste electrical and electronic equipment (WEEE).

This product has required the extraction and use of natural resources for its production. It may contain hazardous substances that could impact health and the environment, if not properly disposed.

In order to avoid the dissemination of those substances in our environment and to diminish the pressure on the natural resources, we encourage you to use the appropriate take-back systems for product disposal. Those systems will reuse or recycle most of the materials of the product you are disposing in a sound way.



The crossed out wheeled bin symbol informs you that the product should not be disposed of along with municipal waste and invites you to use the appropriate separate take-back systems for product disposal.

If you need more information on the collection, reuse, and recycling systems, please contact your local or regional waste administration. You may also contact your supplier for more information on the environmental performance of this product.

### Brazilian Compliance





# Agency Compliance Statements: DataMan Base Station

The DataMan Base Station meets or exceeds the requirements of all applicable standards organizations for safe operation. However, as with any electrical equipment, the best way to ensure safe operation is to operate them according to the agency guidelines that follow. Please read these guidelines carefully before using your device.

Regulator	Specification
USA	FCC Part 15B, Class A
	FCC Part 15.247
Canada	ICES-003
	RSS 210
European Community	EN301 489-1 / -17
	EN300 328-2
	EN60950

## FCC Class A Compliance Statement for the DataMan Base Station

This equipment has been tested and found to comply with the limits for a Class A digital device, pursuant to part 15 of the FCC Rules. These limits are designed to provide reasonable protection against harmful interference when the equipment is operated in a commercial environment.

This equipment generates, uses, and can radiate radio frequency energy and, if not installed and used in accordance with the instruction manual, may cause harmful interference to radio communications. Operation of this equipment in a residential area is likely to cause harmful interference in which case the user will be required to correct the interference at his own expense.

This device complies with Part 15 of the FCC Rules and with RSS-210 of Industry Canada. Operation is subject to the following two conditions:

- (1) this device may not cause harmful interference, and
- (2) this device must accept any interference received, including interference that may cause undesired operation.

Changes or modifications made to this equipment not expressly approved by Cognex may void the FCC authorization to operate this equipment.

## Canadian Compliance

This Class A digital apparatus complies with Canadian ICES-003. Cet appareil numérique de la classe A est conforme à la norme NMB-003 du Canada.

## UL and cUL Statement



UL and cUL listed: UL60950-1 2nd ed. and CSA C22.2 No.60950-1 2nd ed.

## European Compliance



This equipment complies with the essential requirements of EU Directives 1999/5/EC, 2004/108/EC and 2006/95/EC, as applicable. Declarations are available from your local representative.

Където е приложимо, оборудването е съобразено с основните изисквания на Европейските директиви 1999/5/EC, 2004/108/EC и 2006/95/EC. Декларации са налични от местния представител.

Toto zařízení splňuje základní požadavky směrnic EU 1999/5/ES, 2004/108/ES a 2006/95/ES, vždy dle konkrétního způsobu použití. Příslušná prohlášení jsou k dispozici u vašeho lokálního distributora.

Dette udstyr overholder de væsentlige krav i EU-direktiv 1999/5/EF, 2004/108/EF og 2006/95/EF, som er relevant. Erklæringerne kan fås hos din lokale repræsentant.

Tämä laitteisto täyttää seuraavat EU Direktiivien olennaiset vaatimukset 1999/5/EY, 2004/108/EY ja 2006/95/EY, soveltuin. Vaatimusten-mukaisuusvakuutukset

## Agency Compliance Statements: DataMan Base Station (Continued)

ovat saatavilla paikalliselta edustajalta.

Dit produkt voldoet aan de voorschriften van de richtlijnen van de EG Raad (1999/5/EC, 2004/108/EC en 2006/95/EC), indien van toepassing. Declaraties zijn beschikbaar bij uw locale vertegenwoordiger.

Cet appareil est conforme aux exigences essentielles des Directives de l'Union Européenne 1999/5/CE, 2004/108/CE et/ou 2006/95/CE. Veuillez consulter votre représentant local pour les déclarations applicables.

Ezen készülék technikai jellemzői megfelelnek a vonatkozó 1999/5/EC, 2004/108/EC és 2006/95/EC EU rendeletekben foglalt követelményeknek. A megfelelőségi dokumentáció a gyártó helyi partnereinél áll az Ön rendelkezésére.

Questo prodotto, ove applicabile, risponde alle direttive Europee 1999/5/EC, 2004/108/EC e 2006/95/EC. Dichiarazioni sono disponibili presso il vostro rappresentante locale.

Ten sprzet jest zgodny z ogólnymi wymaganiami Dyrektyw UE nr 1999/5/EC, 2004/108/EC i 2006/95/EC, na ile znajdują zastosowanie. Oświadczenia są dostępne u lokalnych przedstawicieli.

Acest echipament este în conformitate cu cerințele esențiale ale Directivelor EU 1999/5/EC, 2004/108/EC și 2006/95/EC. Certifi-catele sunt disponibile la reprezentanta locală. Toto zariadenie spĺňa základné požiadavky smerníc EÚ 1999/5/ES, 2004/108/ES a 2006/95/ES, vždy podľa konkrétneho spôsobu použitia. Príslušné vyhlásenia sú k dispozícii u vášho lokálneho dis-tribútora.

Das Gerät erfüllt die wesentlichen Anforderungen der EU-Direktiven 1999/5/EC, 2004/108/EC und 2006/95/EC, soweit anwendbar. Eine entsprechende Bescheinigung kann bei Ihrem zuständigen Vertriebspartner angefordert werden.

Ta oprema je skladna in izpolnjuje nujne zahteve direktiv EU 1999/5/ES, 2004/108/ES in 2006/95/ES. Deklaracije so na voljo pri vašemkrajevnem predstavniku.

Αυτός ο εξοπλισμός συμμορφώνεται με τις βασικές απαιτήσεις των εφαρμοσμένων οδηγιών 1999/5/EC, 2004/108/EC και 2006/95/EC της Ευρωπαϊκής Ένωσης. Οι επίσημες δηλώσεις είναι διαθέσιμες από τον τοπικό σας αντιπρόσωπο.

Dan l-apparat huwa konformi mar-regolamenti stipulati mid-Direttivi Ewropej 1999/5/EC, 2004/108/EC u 2006/95/EC skond kif inhu likabbli. Kopji ta' dawn id-dikjarazjonijiet huma aċċessibbli mingħand ir-rappreżentant locali tiegħek.

Este equipo cumple com las condições vigorantes de la EU directivas 1999/5/EC, 2004/108/EC e 2006/95/EC, com é pertinente. Las normativas estão disponível com su representado local.

Este equipo cumple con los requerimientos esenciales de las directivas de la EU 1999/5/

EC, 2004/108/EC y 2006/95/EC, si es aplicable. Dichas declaraciones están en poder de sus representantes locales.

Ši iranga atitinka esminių ES direktyvų 1999/5/EC, 2004/108/EC ir 2006/95/EC reikalavimus. Deklaracijos galima gauti iš Jūsų vietinio atstovo.

Šis iekartas atbilst ES direktivų 1999/5/EC, 2004/108/EC un 2006/95/EC prasibam. Deklarācijas ir pieejamas reģionālajaspasrtašvniecības. See seadmed vastavad olulistele nõuetele ELi direktiivide 1999/5/EC, 2004/108/EC ja 2006/95/EC, mida kohaldatakse. Deklaratsioonid on saadaval Teie kohaliku esindaja.

### For European Union Users

Cognex complies with Directive 2002/96/EC OF THE EUROPEAN PARLIAMENT AND OF THE COUNCIL of 27 January 2003 on waste electrical and electronic equipment (WEEE).

This product has required the extraction and use of natural resources for its production. It may contain hazardous substances that could impact health and the environment, if not properly disposed.

In order to avoid the dissemination of those substances in our environment and to diminish the pressure on the natural resources, we encourage you to use the appropriate take-back systems for product disposal. Those systems will reuse or recycle most of the materials of the product you are disposing in a sound way.



The crossed out wheeled bin symbol informs you that the product should not be disposed of along with municipal waste and invites you to use the appropriate separate take-back systems for product disposal.

If you need more information on the collection, reuse, and recycling systems, please contact your local or regional waste administration. You may also contact your supplier for more information on the environmental performance of this product.

## Reader Control Codes

---



Reset Scanner to  
Factory Defaults



Reboot  
Scanner



USB Serial



USB Keyboard



Enable DHCP



USB Keyboard for  
Base Station



Pair

## Keyboard Language (Corded Readers Only)

---



US English



German



French



Spanish



Japanese

Copyright © 2015 Cognex Corporation All Rights Reserved. This document may not be copied in whole or in part, nor transferred to any other media or language, without the written permission of Cognex Corporation. The hardware and portions of the software described in this document may be covered by one or more of the U.S. patents listed on the Cognex web site <http://www.cognex.com/patents.asp>. Other U.S. and foreign patents are pending. Cognex, the Cognex logo, UltraLight and DataMan are trademarks, or registered trademarks, of Cognex Corporation.