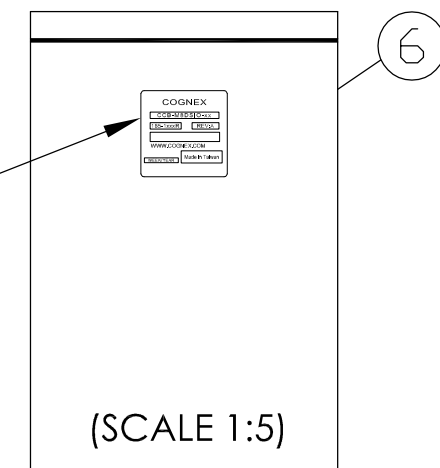
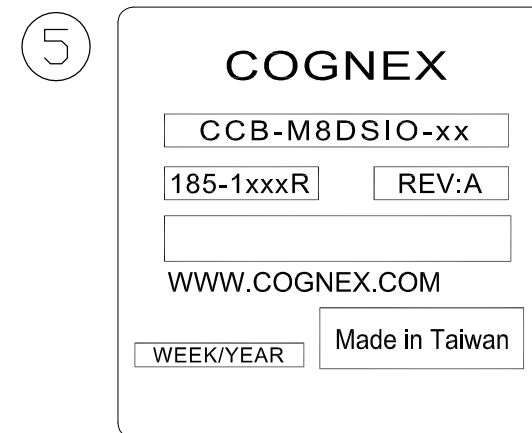
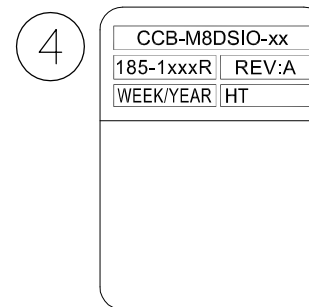


NOTES:

- THIS CABLE MUST BE MADE FROM UL AND CSA RECOGNIZED OR LISTED PARTS.
- SHIELD TO BE TERMINATED TO COUPLING NUT.
- SEE CONNECTOR VIEWS FOR PIN ORIENTATIONS.
- HIGH POT TEST AND VERIFY CONTINUITY ON ALL CONDUCTORS.
- CABLE TO BE COILED AND PACKAGED IN AN 8"X 12" CLEAR PLASTIC BAG.
- COGNEX LOGO FONT : EUROSTILE EXT2.  
BARCODE CONTENT : 185-xxxxR (SEE CHART A)  
BARCODE TYPE : 128, 6MM HIGH (MIN)
- ROHS COMPLIANCE

P1	WIRE	P2	SIGNAL
1	BROWN	4	HS OUT 0
2	WHITE	5	HS OUT 1
3	BLUE	2	TRIGGER +
4	BLACK	3	TRIGGER -
5	GRAY	15	COMMON

PIN 6 THROUGH 14 NOT CONNECTED



COGNEX PART NUMBER	CABLE LENGTH	COGNEX PRODUCT ID	REV.	HSIN-TU Number
185-1099R	0.7M +22mm -0mm (2' 3")	CCB-M8DSIO-00	A	P4CF255043G
185-1100R	2M +42mm -0mm (6' 7")	CCB-M8DSIO-02	A	P4CF255012G
185-1101R	5M +102mm -0mm (16' 5")	CCB-M8DSIO-05	A	P4CF255044G
185-1102R	10M +152mm -0mm (32' 10")	CCB-M8DSIO-10	A	P4CF255045G
185-1103R	15M +152mm -0mm (49' 2")	CCB-M8DSIO-15	A	P4CF255046G

CUSTOMER'S APPROVAL

This drawing is only for sample reference.

6	PLASTIC BAG: 8"*12"	1PCS
5	BAG LABEL: 57*57mm (White background, black font)	1PCS
4	WRAP LABEL: 30*40mm (White background, black font)	1PCS
3	CABLE: CL2*5C 26AWG (YELLOW)	1PCS
2	FEMALE, 15P D-SUB	1PCS
	CONTACT PIN	8PCS
	SHIELDED DB15 CONNECTOR KIT W/T-SCREWS (BLACK)	1SET
1	OVERMOLD, STRAIN, RELIEF (YELLOW)	1SET
	COUPLING RING, EXT. THREAD	1PCS
	O-RING SEAL (BLACK)	1PCS
	CONTACT PIN	5PCS
	INSULATOR, M8-5, MALE (YELLOW)	1PCS
NO	DESCRIPTION	QTY

3					APPROVED	//	GENERAL TOLERANCES	TREATMENT	-----	MATERIAL	-----
2					CHECKED	//	mm ±0.03	SCALE	A3=1:1	SPEC.	CF255
1						//	INCH ±0.05	UNIT	mm	PART NAME	CABLE, M8-5 B-CODE MALE, 15P D-SUB STRAIGHT DC KEY
	No.	Revised Item	Ecn No.	Record	Approved	DRAWN	ANGULAR ± 3°	PIECES	-----	PART NO	
	THIS DRAWING CONTAINS INFORMATION THAT IS PROPRIETARY TO HSIN TU TECHNOLOGY CO., LTD AND SHOULD NOT BE USED WITHOUT WRITTEN PERMISSION.					THIRD ANGLE PROJECTION		SHEET NO	1/2	DRAW NO	AH2015006

10 9 8 7 6 5 4 3 2 1

F

E

D

C

B


A

	Component	Item	Detail
<b>M8-5 B-CODE Connector (P1)</b>	Nut	Material	Brass
		Plating	Nickel
		Size(knurl length)	6mm
	Pins	Material	Brass
		Plating	Gold plate
		Type	IEC
	Key	Type	B-code
	Insert	Material	Nylon
	Overmold	Material	PVC
	Strain Relief	Length	29mm
<b>DB15 Connector (P2)</b>	Connector	Type	Plastic shielded DB15 enclosure kit w/t-screws
	Pin	Material	Brass
		Plating	Gold plate
		Type	Crimp w/insulation support
	Ferrule	Material	Steel
		Plating	Tin
Type		Step	
<b>Cable</b>	Type	Type	High Flex
		UL Style	UL CL2 / 21002 105°C 300V
	Jacket	Jacket material	TPE
		Jacket thickness	1.2mm
		Overall Dia	5.2mm
		Jacket color	YELLOW
	Conductors	Wire	26 AWG
		Pairing	Not Paired
		Cond insulation material	PVC
		Cond overall dia	1.1mm
Stranding		19 / 38 AWG	

	Component	Item	Detail
<b>Cable Assembly</b>	Performance	Current rating	2A
		Voltage rating	60vac / 70vdc
		Operating temp	-0°C ~ -80°C
		Linear Bend Cycle rating	10,000K
		Tortional Cycle rating	10,000K
		Compliance (elect)	UL & CSA comp parts
		Compliance (env)	Rohs
		Flame Rating	( IEC 60332-1-2 )
		Protection (moisture)	IEC IP67
		Fluke channel test	Machine NO.
	Limit		Korea Fluke F/UTP CAT 5e
	Impedance		<=115 ohm for 5M/10M/15M/30M
	Insertion loss		<=12Db for 30M
		Sampling method	IP67 per MIL STD 105EII

CUSTOMER'S APPROVAL

This drawing is only for sample reference.

3					APPROVED	//	GENERAL TOLERANCES	TREATMENT	-----	MATERIAL	-----
2					CHECKED	//	mm INCH	SCALE	A3=1:1	SPEC.	CF255
1						//	±0.03 ± ±0.05 ± ±0.1 ±	UNIT	mm	PART NAME	CABLE, M8-5 B-CODE MALE, 15P D-SUB STRAIGHT DC KEY
No.	Revised Item	Ecn No.	Record	Approved	DRAWN	//	ANGULAR ± 3° THIRD ANGLE PROJECTION	PIECES	-----	PART NO	
THIS DRAWING CONTAINS INFORMATION THAT IS PROPRIETARY TO HSIN TU TECHNOLOGY CO., LTD AND SHOULD NOT BE USED WITHOUT WRITTEN PERMISSION.						 <b>HSINTU</b> HSIN TU TECHNOLOGY CO., LTD		SHEET NO	2/2	DRAW NO	AH2015006

10 9 8 7 6 5 4 3 2 1