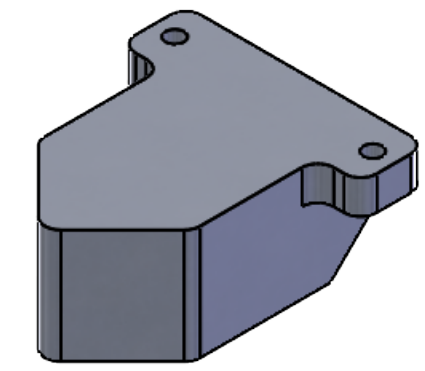
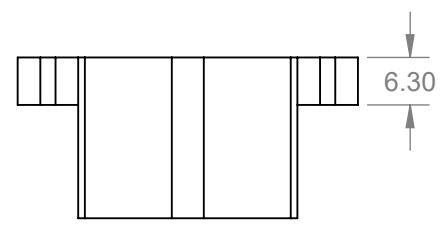
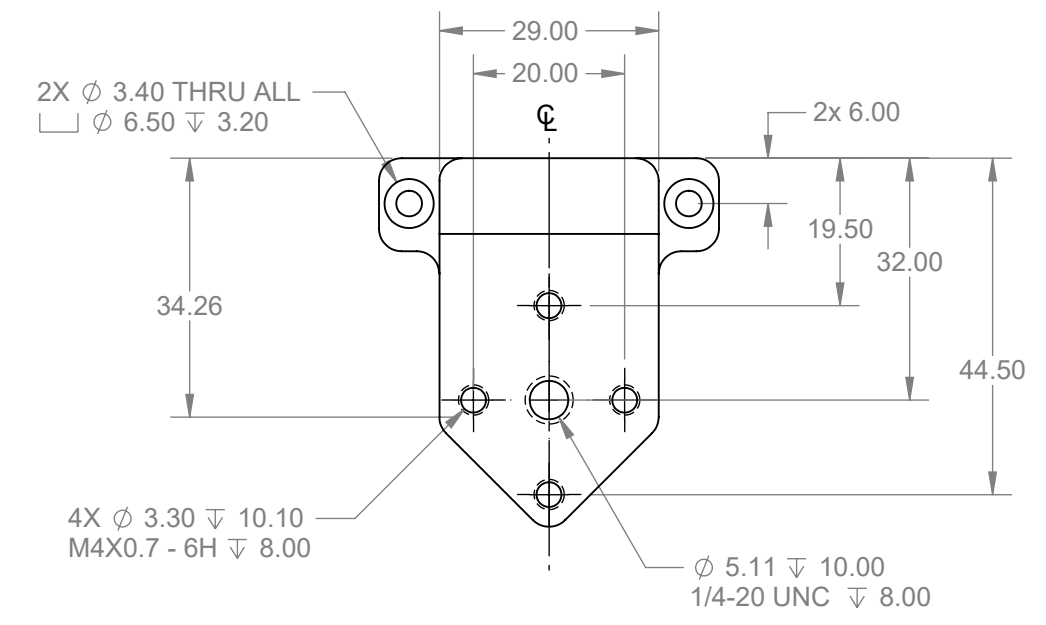
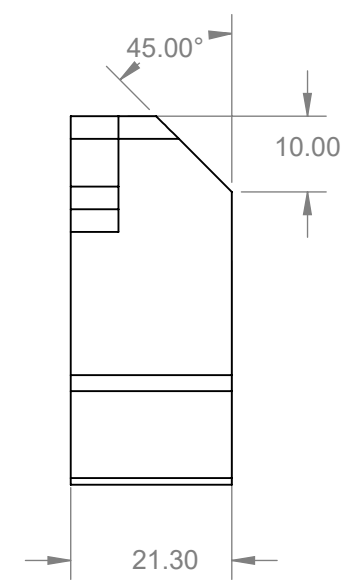
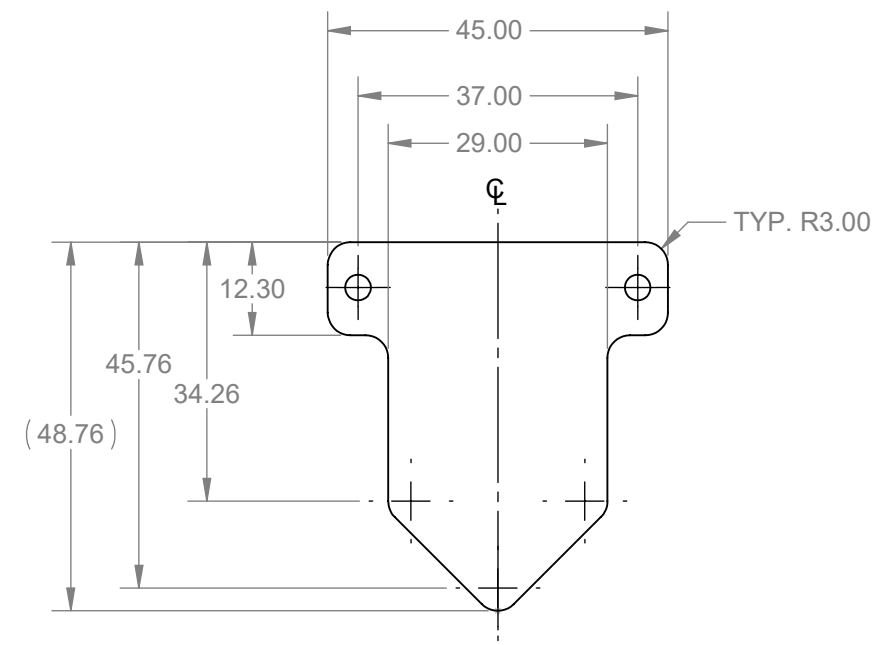
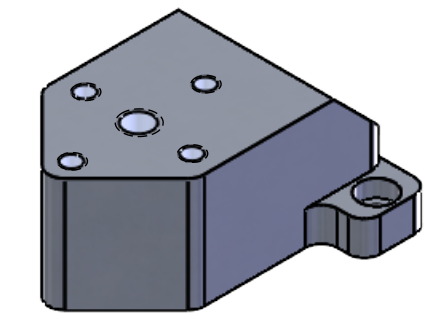


REVISIONS			
REV.	DESCRIPTION	DATE	APPROVED
X1	INITIAL RELEASE	8/24/15	AG
A	RELEASE PER ECO 15-000995	11/16/2015	AG
01	RELEASE PER ECO 6000004601	9/3/2021	JM



BOTTOM ISO VIEW



TOP ISO VIEW

NOTES:
 1. UNLESS OTHERWISE SPECIFIED, THIS DRAWING TO BE USED IN CORRELATION WITH SUPPLIED 3D CAD DATA FILE WITH THE SAME NAME AND REVISION AS THIS DRAWING. ALL PART DIMENSIONS, DETAILS, AND FORM ARE TO BE DETERMINED DIRECTLY FROM THE SUPPLIED 3D CAD DATA FILE. HOWEVER, ALL DIMENSIONS AND TOLERANCES ON THIS DRAWING TAKE PRECEDENCE OVER SUPPLIED 3D CAD DATA FILE. THIS DRAWING PROVIDES ADDITIONAL INFORMATION FOR TOOL BUILD AND THE PRODUCTION AND CHECKING OF THIS PART.
 2. REMOVE ALL BURRS AND SHARP EDGES.
 3. PART TO BE CLEAN AND DRY.
 4. ALL MATERIALS, PROCESSES AND FINISHES OF FINAL PRODUCT TO COMPLY WITH EU RoHS DIRECTIVE. EACH HOMOGENOUS MATERIAL NOT TO EXCEED THE MAXIMUM CONCENTRATION VALUE (MCV) FOR RoHS RESTRICTED MATERIALS:
 SUBSTANCE RoHS LIMIT: MCV
 A. LEAD (Pb) < 0.10% = < 1,000PPM
 B. MERCURY (Hg) < 0.10% = < 1,000PPM
 C. HEXAVALENT CHROMIUM (Cr VI) < 0.10% = < 1,000PPM
 D. CADMIUM (Cd) < 0.01% = < 100PPM
 E. POLYBROMINATED BIPHENYL (PBB) < 0.10% = < 1,000PPM
 F. POLYBROMATED DIPHENYL ETHER (PBDE) < 0.10% = < 1,000PPM
 VENDOR TO PROVIDE CERTIFICATE OF COMPLIANCE FOR ALL MATERIALS, PROCESSES AND FINISHES OF FINAL PRODUCT.

PROPRIETARY AND CONFIDENTIAL © 2013 COGNEX CORP. ALL RIGHTS RESERVED. THIS DOCUMENT IS PROPRIETARY TO COGNEX CORP., NATICK, MA AND MAY NOT BE USED IN ANYWAY, DISCLOSED TO OTHERS, OR REPRODUCED, IN WHOLE OR IN PART, EXCEPT AS EXPRESSLY AUTHORIZED BY COGNEX IN WRITING. ANY PERMITTED REPRODUCTION OF THIS DOCUMENT MUST INCLUDE THIS NOTICE.	DIMENSIONS UNLESS OTHERWISE SPECIFIED, DIMENSIONS ARE IN MILLIMETERS [INCHES] .	NAME	DATE	COGNEX NATICK, MA 01760			
	TOLERANCES X.X[X.XX]: ± 0.25[.010] X.XX[X.XXX]: ± 0.13[.005] ANGULAR: ± .5°	DRAWN	A. GOODALE		8/24/15	FLAT SURFACE MOUNT Merlin Vision	
	GEOMETRIC TOLERANCES PER ASME Y14.5M-1994	CHECKED	-	-	DWG. NO.		
		MFG APPR.	-	-	371-10060R	REV	
		MATERIAL	AL 6061-T6		01		
	FINISH	BLACK ANNOXIDIZED		SIZE	B	SCALE: 1:1	SHEET 1 OF 1

6

5

4

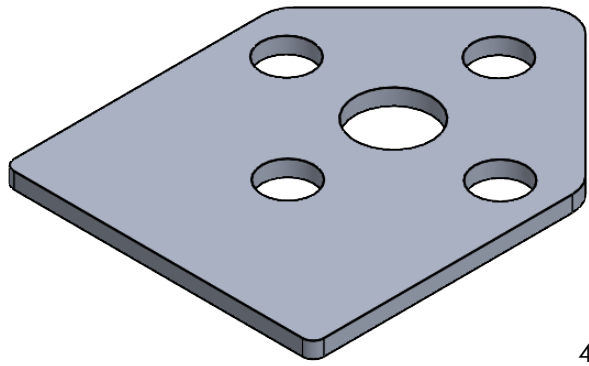
3

2

1

REVISIONS

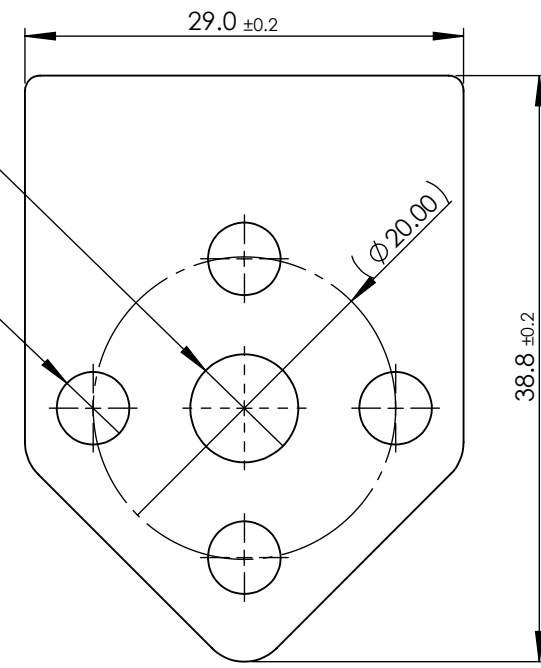
REV.	DESCRIPTION	DATE	MODIFIED BY
01	INITIAL CREATION	2021 DEC 14	JJH



3D View - Scale 2:1

Ø 7.1 ±0.2 THRU

4X, Ø 4.8 ±0.2 THRU



1.50 ±0.10

A

// 0.2 A

Apply 3M 468MP adhesive tape this side

NOTES:

1. THIS DRAWING HAS TO BE USED IN CORRELATION WITH SUPPLIED 3D CAD DATA WITH THE SAME NAME AND REVISION AS THIS DRAWING. DIMENSIONS AND TOLERANCES ON THIS DRAWING TAKE PRECEDENCE OVER SUPPLIED 3D CAD DATA FILE. ADDITIONAL DIMENSIONS SHOULD BE TAKEN FROM THE 3D DATA.
2. ALL MATERIALS, PROCESSES AND FINISHES FOR THIS PRODUCT OR PART MUST COMPLY WITH THE LATEST VERSIONS OF CHINA ROHS, EU-ROHS, EU-REACH, EU-WFD AND U.S. EPA TSCA REGULATIONS OR DIRECTIVES. ADDITIONALLY FOR TOUCHABLE PARTS OF PRODUCTS AND CABLES CALIFORNIA PROP-65 MUST COMPLY.
3. PARTS TO BE FREE OF SHARP EDGES AND BURRS.
4. PART TO BE CLEAN AND DRY.
5. ALL DIMENSIONS ARE AFTER FINISH
6. ALL COSMETIC REQUIREMENTS ACCORDING TO COGNEX STANDARD 4000006609.

THIS DOCUMENT IS PROPRIETARY TO COGNEX CORP., NATICK, MA. AND MAY NOT TO BE USED IN ANY WAY, DISCLOSED TO OTHERS, OR REPRODUCED, IN WHOLE OR IN PART, EXCEPT AS EXPRESSLY AUTHORIZED BY COGNEX IN WRITING. ANY PERMITTED REPRODUCTION OF THIS DOCUMENT MUST INCLUDE THIS NOTICE. ©2019 COGNEX CORP. ALL RIGHTS RESERVED.

DOC TYPE	PART DRAWING
CREATED BY	jharman
CHECKED BY	RD
MATERIAL	6061-T6 (SS)
FINISH	Black Anodize
ROUGHNESS	
VOLUME	1251.83 mm ³
WEIGHT	3.38 g



TITLE		ADAPT Bracket Spacer					
PROJECT		Parakeet					
SIZE	A4	DATE	12/14/2021	DWG NO.	370-20104	REV	01
SCALE	2:1	UNIT	mm	VIEW		SHEET 1 OF 1	

6

5

4

3

2

1